

ELS Essential
Letters and
Sounds
developed by Knowledge Schools Trust

Essential Letters and Sounds The Phonics Screening Check



ELS

Essential
Letters and
Sounds

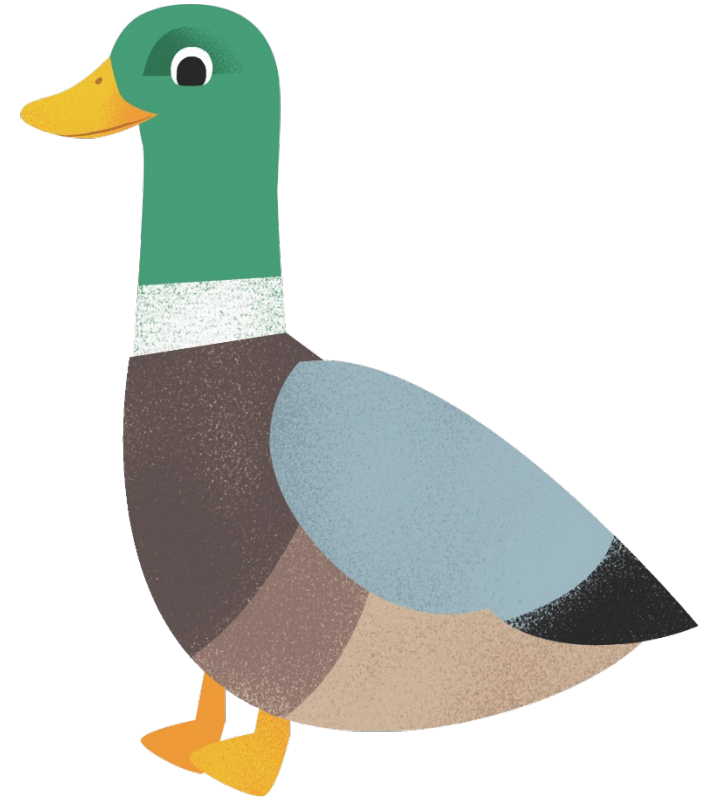
developed by Knowledge Schools Trust

Getting all children
to read well, quickly



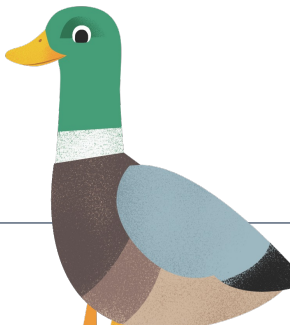
What are we going to cover?

- What is the Phonics Screening Check and why was it introduced?
- What does it check?
- What are the allowances?
- How ELS supports children to achieve the outcomes of the PSC



What is the Phonics Screening Check?

- Phonics Screening Check is a statutory assessment conducted in the Summer Term of Year One. This year it is week beginning 10th June.
- Introduced in 2011, to ensure that all children have learnt phonic decoding to an age-appropriate standard.
- The aim of the Phonics Screening Check was to encourage all schools to pursue a rigorous phonics programme for all children from the start of primary school.



Key Information

- Pseudo words, are not real words. In the assessment, these words will have an alien image next to them.
- All accents will be taken into account when the child is answering.
- Any pronunciation difficulties will be taken into account.
- Your child's final answer is what we will take.



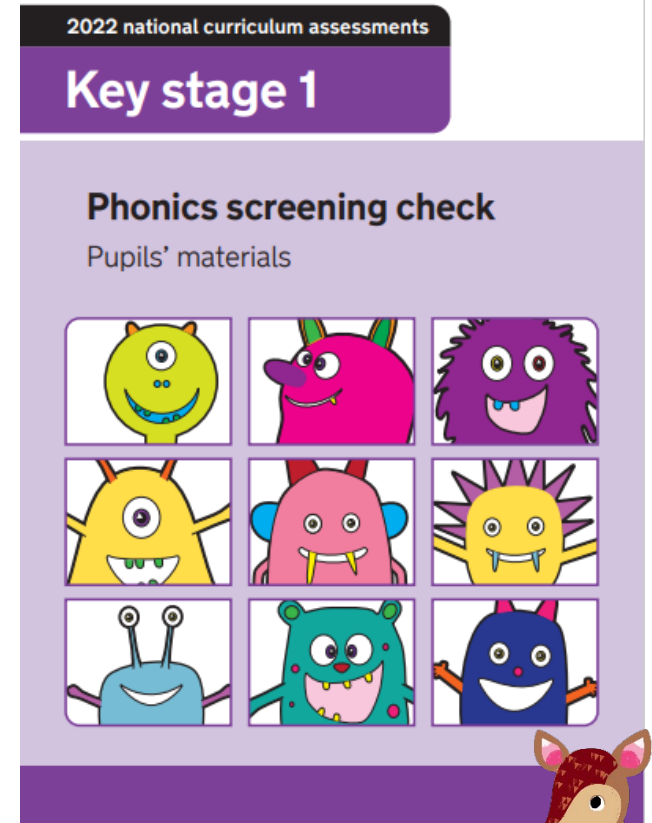
What does the Phonics Screening Check assess?

40 words

Section 1: 8 real words and 12 pseudo words

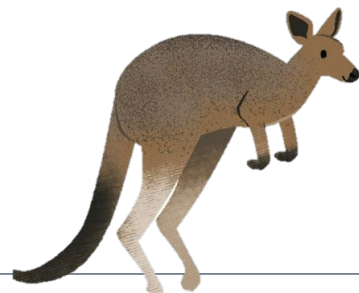
Section 2: 12 real words and 8 pseudo words

https://assets.publishing.service.gov.uk/government/uploads/system/uploads/attachment_data/file/809986/2019_phonics_pupils_materials_standard.pdf



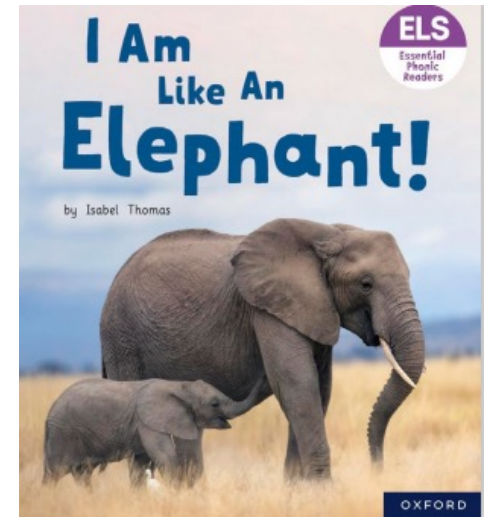
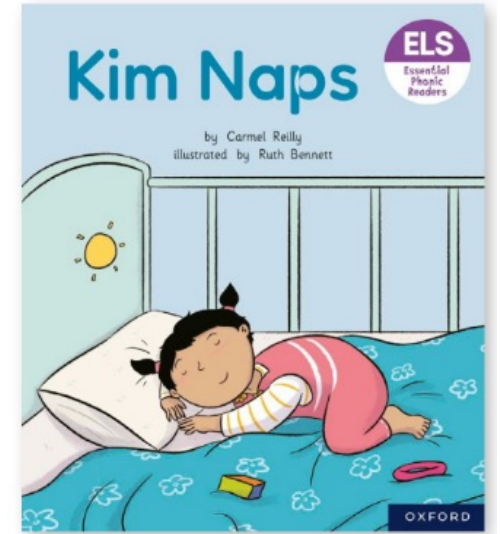
How does ELS support the Phonics Screening Check

- We focus on teaching children to read and to have access to books and text.
- ELS teaches children vocabulary and ensures that children have meaning and context for language.
- Teachers accuracy, fluency and confidence.
- Accurate assessment ensures that you know where every child is.



How can you help at home?

- Listen to your child read 3 times a week minimum
- Watch the online pronunciation videos
- If your child is finding it hard to read a word, help them break words down into individual sounds and then blend them together to read the word.



- <https://www.fairviewprimary.co.uk/phonics-2/>

Questions

